

DON'T MISS THIS AUCTION

COMPLETE COMPANY DISPERSAL

AUCTION



DELTA ELECTRICAL CONTRACTORS OF DELTA LANSING, INC.

Industrial/Commercial Electrical Contractor

**4815 Lansing Road
Charlotte (Lansing), Michigan 48813**

**GPS LOCATION:
N.42.38.250 – W.084.42.995**

NOTICE TO BIDDERS:

Delta Electrical Contractors of Lansing, Inc. provided Industrial/Commercial Electrical Services throughout Michigan. Don't miss the opportunity of a lifetime to purchase all the assets of Delta at public auction.

GENERATOR SET, PICKUPS, FLATBED TRUCKS, MECHANICS TRUCKS, CARGO TRUCKS, DIGGER DERRICK TRUCK, ATTACHMENTS, SKID-STEER LOADERS, EQUIP TRAILERS, HAND TOOLS, PIPE THREADING MACHINES, BENDERS, PROJECT SUPPORT EQUIPMENT & ELECTRICAL SUPPLIES BY THE 1,000s, MISCELLANEOUS

**THURSDAY,
OCTOBER 18, 2012
10:00 A.M. EDT**

**CAN'T MAKE IT TO THE AUCTION?
BID ONLINE:**

proxibid www.proxibid.com/United

This auction will feature live online bidding through PROXIBID. All Internet buyers are required to register 48 hours prior to the auction at the Proxibid Website (www.proxibid.com). All live internet bidders will be charged a 12% buyers fee for this service. Internet bidders will be required to comply to all terms and conditions for this auction as outlined in the buyers catalog.



Onan 400DFEB 500KVA (544 Hrs)



Teco A4H-47R-FT22-BTX0 Digger Derrick

1000s STOCK ITEMS



Greenlee 881CT Cam Track



UNITED AUCTIONEERS & APPRAISERS
Heavy Equipment Auctioneers/Investment Recovery

685 N. Shaytown • Vermontville, MI 49096

Business (517) 282-1346 • Fax (517) 726-0556

www.uaa-auctions.com

"Serving the Trucking & Heavy Equipment Industries Since 1990"



(4) 2010 ArrowMaster V Solar



1 of 2 Cargo Vans



1 of 2 Trailing TK18-2400



1 of 3 Cargo Trailers

AUTOMOBILES/PICKUP TRUCK:

2008 CHEV MALIBU LTZ 4 DR AUTOMOBILE, S/N 1G1ZK57788F233434, 061196 ODOMETER, 3.6L V6 Gas Engine, Auto Trans, A/C, Cruise, Tilt, Pwr Seats/Door Locks/Windows, MP3 Player, Satellite Radio, Leather Bucket Seats, Sun Roof, Aluminum Wheels

1997 CHEV 3500 S/A PICKUP TRUCK, S/N 1GCHK34R1VE111061, 132821 ODOMETER, c/w 5.7L V8 Vortec Gas Eng, Auto Trans, A/C, 8' Box

CARGO VAN TRUCKS:

1999 FORD E250 ECONOLINE CARGO VAN TRUCK, S/N 1FTNE24L1XHB77580, 111468 ODOMETER, c/w 5.4L V8 Gas Eng, Auto Trans, Spot Light, Ladder Racks, Aluminum Wheels

1997 CHEV 2500 CARGO VAN TRUCK, S/N 1GCFG25ROV1021134, 105545 ODOMETER, c/w 5.7L V8 Vortec Gas Eng, Auto Trans, Ladder Racks, A/C

FLATBED TRUCK:

2001 FORD F550 S/A FLATBED TRUCK, S/N 1FDDAF56F91EC51112, 143714 ODOMETER, c/w 7.3L V8 Powerstroke Diesel Eng, Auto Trans, 12' Bed w/Metal Stake Racks, Roll-Rite Tarp, Hyd Tailgate

MECHANICS TRUCKS:

1999 IHC 4700 S/A MECHANICS TRUCK, S/N 1HTSLABM7XH661822, 0153154 ODOMETER, 08629 Hrs, c/w IHC T44E 7.3L-210 Diesel Eng, Auto Trans, A/C, Stahl 11' Box

1997 GMC 3500 S/A MECHANICS TRUCK, S/N 1GDJC34F7VF036943, 163786 Odometer - 001949 Hrs, c/w V8 Diesel Eng, Auto Trans, 11' Stahl Box

DIGGER-DERRICK TRUCK:

1998 TECO A4H-47R-FT22-BTX0 DIGGER DERRICK, S/N 9980432, c/w 15,000 lb Winch, 47' Sheave Height, 1 Man Bucket, Pole Grab, 14' MCB Service Box, Hyd Outriggers, (3) Section Hyd Boom, Heel Winch, Pin on Bucket, Rear Controls, Rear Center Mount, Hyd Outriggers, 2 Speed Digger, Mounted on 1998 IHC 4700 S/A S/N 1HTSCAANXWH577146, w/ DT466E Diesel Eng, 6 Plus Trans, 070217 Odometer, - 007223 Hrs

DUMP/ATTENUATOR TRUCKS:

1996 IHC 2554 S/A DUMP/ATTENUATOR TRUCK, S/N 1HTGBAAR2TH341145, 120030 ODOMETER, 005069 HRS, c/w IHC DT466-A230 Diesel Eng, 4 Spd Auto Trans, 11' Box, Barrier Systems Attenuator

1992 FORD L8000 S/A DUMP TRUCK, S/N 1FDYK82A3NVA34571, 162953 ODOMETER, c/w FORD 7.8L-240 Diesel Eng, 4 Spd Auto Trans, 11' Box, Front Snow Blade Attachment

ALL TERRAIN VEHICLE:

2007 LANDPRIDE 4410ST 4X4 TREKER ATV, S/N 475088, 0242 HRS, c/w Canopy, Honda 20 Hp OHV 2V Gas Eng, Forward/Reverse CVT Trans, 4' Manual Dump Box

SKID-STEER LOADER:

2001 GEHL SL5635 II SKID-STEER LOADER, S/N 501126, 01171 HRS, c/w Canopy, Manual Quick Coupler, Aux Hydraulics, GP Bucket w/ Bolt on Edge

AERIAL LIFT:

2006 JLG 2630ES SCISSOR LIFT, S/N 0200154323, 00227 HRS, c/w 24VDC Electric, 25' Platform Height, Extensions, Remote Control

STATIONARY/ PORTABLE GENERATOR SETS:

ONAN 400DFEB 500 KVA PORTABLE GEN SET, S/N F910397334, 0544 HRS, c/w CUMM KTA19G2-600 Diesel Eng, 1200 Amp Disconnect, 1 Ph & 3 Ph Switch, Young MWC86FR-D7 Radiator w/3" Inlet/Outlet, 7.5Hp 230/460V 3Ph Electric Motor

KDE 6500 E PORTABLE GEN SET, c/w 1 Cyl Diesel Eng, Electric Start

CARGO TRAILERS:

2002 HAULMARK CADET CD7X18WM T/A CARGO TRAILER, S/N 16HPB18271H085921, c/w 7000 GVWR, 18x7' Cargo Box, Ramp Rear Door, Side Entry, Torflex Susp, Electric Brakes

2000 ROADMASTER RMC714TA2 T/A CARGO TRAILER, S/N 5DT211F28Y1001259, c/w 7000 GVWR, 14x7' Cargo Box, Swing Doors, Electric Brakes

2005 ROYAL RST.8.5X16TH2 T/A CARGO TRAILER, S/N 5LABE16245M095774, c/w 3178 GVWR, 16x8'-6" Cargo Box, Swing Rear Doors, Side Entry, Spring Susp, Electric Brakes

VAN STORAGE TRAILERS:

1973 AMERICAN 48X96 T/A VAN STORAGE TRAILER, S/N 24674, c/w Non Insulated, 54,000 GVWR, Landing Legs, Swing Doors, Spring Susp, Spoke Wheels, Alum Ribbed Sides

1972 TIMPTE 40X96 T/A VAN STORAGE TRAILER, S/N 26775, c/w Insulated, Landing Legs, Swing Doors, Spring Susp, Spoke Wheels, Alum Ribbed Sides, Side Entry

1971 TIMPTE 40X96 T/A VAN STORAGE TRAILER, S/N 22408, c/w Insulated, Landing Legs, Swing Doors, Spring Susp, Spoke Wheels, Alum Ribbed Sides, Side Entry

EQUIPMENT TRAILERS:

1994 TRAILING TK18-2400 T/A EQUIPMENT TRAILER, S/N 1TKC02429RM078814, c/w 23860 GVWR, 10 Ton Rated, 19'x8' Wood Deck, Beavertail, Ramps, Spring Susp, Electric Brakes

1998 TRAILING TK18-2400 T/A EQUIPMENT TRAILER, S/N OBL, c/w 23860 GVWR, 10 Ton Rated, 19'x8' Wood Deck, Beavertail, Ramps, Spring Susp, Electric Brakes

1979 TIGERLINE 20X8 QUAD TRI/A EQUIPMENT TRAILER, S/N OBL (F3120), c/w Beavertail, Ramps, Electric Brakes, Disc Wheels

2002 BNM 18' T/A EQUIPMENT TRAILER, S/N OBL (1B9CT18283E216001), c/w 18'x6'-7" Wood Deck, Ramps, Landing Leg, Spring Susp, Electric Brakes

1985 ASSEMBLED 17' TRI/A EQUIPMENT TRAILER, S/N OBL, c/w 17'x8' Steel Deck, 12VDC Electric Winch, Beavertail, Ramps, Spoke Wheels

1968 MILLER 15' T/A EQUIPMENT TRAILER, S/N OBL (971), c/w 15'-6"x7'-11" Wood Deck, Tilt, Manual Folding Tail

1996 DITCH-WITCH S5A S/A EQUIPMENT TRAILER, S/N 1DS0000B3T17N0746, c/w 6000 GVWR, 11'-4"x5'-9" Tilt, Electric Brakes

FIELD OFFICE TRAILERS:

(2) MFE 32X8 T/A FIELD OFFICE TRAILER, S/N 107295, 105812, c/w Electric Lights/Heat, Plan Tables, Rear Overhead Door

UNKNOWN MFG S/A 8X26 FIELD OFFICE TRAILER, S/N 98768, c/w Lights, Elec. Heat, Plan Tables, Side Entry, Spring Suspension

UNKNOWN MFG S/A 8X26 FIELD OFFICE TRAILER, S/N 16119, c/w Lights, Elec. Heat, A/C, Plan Tables, Side Entry, Spring Suspension

DON'T GO TO THE BIG STORE - BUY IT HERE



2001 Ford F550 XL



2001 Gehl SL5635 II



2002 BNM 18'



2005 Butler BPHD-1500



1 of 6 Field Office Trailers



1 of 7 Parts Cabinets



1996 IHC 2554



1999 IHC 4700

UNKNOWN MFG S/A 8X26 FIELD OFFICE TRAILER, S/N 97-162, c/w Lights, Electric Heat, (2) A/C, Plan Tables, Side Entry, Telephone Box, Spring Suspension

MOBILE STRUCTURE INC S/A 8X26 FIELD OFFICE TRAILER, S/N 11497, c/w Lights, Electric Heat, (2) A/C, Plan Tables, (2) Side Entries, Telephone Box, Spring Suspension

MISCELLANEOUS TRAILERS:

UNKNOWN MFG S/A SPOOL TRAILER, S/N 7934585, c/w Manual Hyd Rise/Lower

2005 BUTLER BPHD-1500 (ETW-3350) S/A POLE TRAILER, S/N 1BUP2510951002137, c/w Landing Leg, 6 Position Extension, Disc Wheels, Electric Brakes

PORTABLE ARROW BOARDS:

(2) **2010 ARROWMASTER V WAAW15/25B SOLAR PORTABLE S/A ARROW BOARDS**, S/N 06107361, 06107363, c/w Batteries

(2) **2010 ARROWMASTER V WAAW15/25B SOLAR PORTABLE ARROW BOARDS**, S/N 06107367, 06107366, c/w Batteries (No Wheels)

ATTACHMENTS:

ATTENUATOR: 2010 BARRIER SYSTEMS U-MAD J100YS01 (Unused Since New), **BROOM:** BOBCAT 72" (FITS SKID STEERS LOADERS), **BACKHOE:** EDGE 509 (FITS SKID STEER LOADERS), **AUGERS:** 2½" HEX SHAFT 48", 36", 28", 20", **BUCKETS:** CASE 480/580, 24", 18", 12" GP Buckets (Very Good Condition), **POWER RAKE:** LANDPRIDE PR1672 PTO Drive, Hyd Angle, 72" Working Width, **DUMP HOPPER:** WRIGHT 1¼ Yd SELF DUMPING HOPPER

MISCELLANEOUS EQUIPMENT:

KALMAR AC WS125 WALK BEHIND PALLET MOVER, S/N WS12531296001, 01830 HRS, c/w 2500 Lb Rated, 42" Forks, 10'-10" Fork Height, 24V Electric, Inboard Charger

DIAMOND CORE CUT CC3500J WALK BEHIND CONCRETE SAW, S/N 140212, 00093 HRS, c/w KOHLER Pro40 2V OHV Gas Eng, 20" Blade Cap, Water System

CRAFTSMAN 3800PSI @ 4.0GPM PORTABLE PRESSURE WASHER, S/N 1015693526, c/w Honda GX 390 1cyl Gas Engine

AIR SYSTEMS SVB-E8-2 VENTILATION SYSTEM, c/w 115/230VAC ¾ HP Elec Motor, 8" Saddle Vents/Flex Duct

STONE S52 WALK BEHIND PLATE COMPACTOR, S/N 0296149, c/w Honda GX160 5.5 HP Engine

MILWAUKEE 5338 ELECTRIC CONCRETE BREAKER, S/N 8054375, c/w 120VAC, w/Cart & Bits

2009 COOPER 2000 KVA PAD MOUNT DISTRIBUTION TRANSFORMER, S/N 0959001066, c/w 3Ph, Liquid Level/Pressure Gauges (APPEARS TO BE UNUSED SINCE NEW)

NONMETALLIC CONDUIT ON REELS:

CARLON 1¼" IPS PVC SCHEDULE 40, (2) IDU, 1" HDPE PVC SCHEDULE 40 (One Unused Since New), ARNCO 1¼" PVC SCHEDULE 40, A-D TECHNOLOGIES 2" PVC SCHEDULE 40, ADU 2" PVC SCHEDULE 40 (Unused Since New), A-D TECHNOLOGIES 3" PVC SCHEDULE 40, ARNCO 3" PVC SCHEDULE 40, A-D TECHNOLOGIES 3" PVC SCHEDULE 40

CONCRETE PUMP/ FORMS:

UNKNOWN MFG PORTABLE T/A CONCRETE PUMP, S/N OB, c/w (2) Deutz F6L912 Diesel Engines, Hydraulic Controls, Dual Plungers, 5" Steel Slick Line

CONCRETE CENTRAL, (6) 24"X12' - (1) 36"X12' - Plus Shorts and Pieces

PROJECT SUPPORT EQUIPMENT:

STATIONARY AIR-COMPRESSORS/HAMMERS: 2003 INGERSOLL-RAND S55-E 5HP 80, GALLON STATIONARY AIR-COMPRESSOR 1PH, LEROI 52 90 LB CONCRETE BREAKER, REEL JACKS, T&S EQUIPMENT W8 HOISTING BEAM, PALLET DOLLY, PARTS JOB BOXES, EMT/RIGID CONDUIT BENDERS ½", ¾" 1", 1¼", 1½", HICKEYS, SCOTT WIRE STRIPPING MACHINE, PANDUIT SC & ST OPTICAM FIBER OPTIC STRIPPING KIT, GREENLEE 853, 855, 555 PORTABLE QUAD BENDERS, GREENLEE 37279 ATTACHMENT FOR 555 OR 555SB BENDERS, GREENLEE 881CT CAM TRACK CONDUIT BENDER, (36) GREENLEE 659 CABLE PULLING TRAYS, (6) GREENLEE 690 FISHING SYSTEMS, GREENLEE 6805 ULTRA CABLE PULLER, GREENLEE 847, 848, 849, PVC HEATERS, GREENLEE 6810 CABLE FEEDER, GREENLEE 766 WIRE PULLER, (3) GREENLEE 7306 HYD KNOCK OUT SETS, GREENLEE 859-4 PVC PLUG SET, GREENLEE 73065B HYD SLUG BUSTER SET, GREENLEE 78065B HYD PUNCH DRIVE SETS, GREENLEE 1990 DIELESS CRIMPER, GREENLEE 764 CABLE CUTTERS, CURRANT TOOLS 152M HYD KNOCKOUT SET, **PIPE THREADING EQUIPMENT:** RIDGID 1224, (2) COLLINS THRED-22-MATIC PORTABLE PIPE THREADING MACHINES, RIDGID 700 HAND PIPE THREADERS, RIDGID 40A, 450, 460 TRI-STANDS, **PORTABLE BAND SAWS:** PORTER-CABLE 7724, **CORDLESS DRILLS:** DEWALT DW983, DC920, **HAMMER DRILLS:** DEWALT DW567, D25213, DW999, BOSCH 11121VSR, 1121DVS, METABO SBE660, 655, **ROTARY DRILLS:** HILTI DD100M, B&D 5095, DEWALT DW530, **RECIPROCATING SAWS:** DEWALT DC385, RAMSET 325, MILWAUKEE 6517, B&D 3105, **ANGLE GRINDERS:** DEWALT D28402, METABO W7-115, MILWAUKEE 6065, **TESTING EQUIPMENT:** FLIR PM675 THERM-CAM INFRARED CONDITION MONITORING SYSTEM, GREENLEE 2011/00521 POWER FINDER CIRCUIT SEEKER SETS, 3MWI-116 MULTI-WIRE IDENTIFIER SET, 3MTK-6A CIRCUIT TRACER KIT, SIEMENS FPI-32 PROGRAMER/TESTERS, NOYES OFS300 OPTICAL FIBER SCOPE, AEMC 3711/3731 CLAMP ON GROUND RESISTANCE METER, AVP 246005B BIDDLE BITE MBITE BATTERY IMPEDANCE TESTER, WAVETEK LANTEK PRO FIBER OPTIC LOSS MEASUREMENT KIT, LUMATESTER HPS STREET LIGHTING TROUBLE SHOOTING KIT, QUALITE 98 SPORT LIGHTING DIAGNOSTIC KIT, SIMENS DPU FIREFINDER XLS LOOP TESTER, PROGRESSIVE 2003 PULSER GROUND FAULT LOCATOR, HUBBELL HI-PROTRONICS 800PL DC INSULATION TESTER, BIDDLE SKV MEGOHMER AEMC 4630 GROUND TESTER, AGILENT TECH WIRESCOPE 350 PRODUCTIVE CABLING CERTIFICATION TESTER, DITCH-WITCH RD400 BURIED PIPE & CABLE LOCATOR, WAVETEK LT 8155 MH2 LAN CABLE, **HEAVY INDUSTRIAL METAL SHELVING:** 16', 14', 10, X3' (Very Good Condition-Orange, Green & Gray)

OFFICE EQUIPMENT: Fax Machines, Chairs, Tables, File Cabinets, etc.

MANUFACTURERS REPRESENTED IN THIS AUCTION: Cantex, Crouse-Hinds, 3M, Steel City, Wiremold, Square D, Panduit, Siemens, AEL, Specified Tech, Hubbell, Ideal, LVS, ITE, Murray, Cutler-Hammer, Sylvania, Cooper, International, Encore, Olympic, Carol, Concrete Central, Levitron, Arlington, Appleton, EMC, U.S. Anchor, Pass & Seymour, Philips, Erico, Barley Creek, Werner, Greenbull, Klein, Greenlee, Ridgid, Burndy, Panasonic, **JUST TO NAME A FEW**

AUCTIONEERS WILL NOT BE RESPONSIBLE FOR ITEMS REMOVED FROM THE SALE BY FORCES OR FACTORS BEYOND THEIR CONTROL.



2006 JLG 2630ES (227 Hrs)



2007 Landpride 4410ST



Diamond Core CC3500J



H.D. Industrial Shelving



UNITED AUCTIONEERS & APPRAISERS
Heavy Equipment Auctioneers/Investment Recovery
 685 N. Shaytown • Vermontville, MI 49096
 Business (517) 282-1346 • Fax (517) 726-0556
www.uaa-auctions.com
"Serving the Trucking & Heavy Equipment Industries Since 1990"

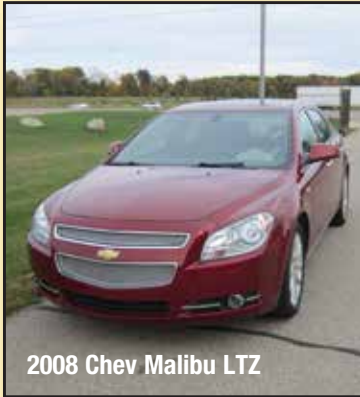
Presorted
 First-Class Mail
 U.S. Postage
PAID
 Twin Cities, MN
 Permit #93723



**DELTA ELECTRICAL CONTRACTORS
 OF LANSING, INC.**

Industrial/Commercial Electrical Contractor

**THURSDAY, OCTOBER 18, 2012,
 AT 10:00 A.M. EDT**



2008 Chev Malibu LTZ



Edge 509

COMPLETE COMPANY DISPERSAL

AUCTION

proxibid

ONSITE OR LIVE INTERNET BIDDING

AXP/12090074

REGISTRATION:

In order to bid and receive a bid catalog, all purchasers must register with the cashiers. Satisfactory photo identification (drivers license, identity card or passport are required). There is no charge for registration.

NOTICE TO BIDDERS:

This is your opportunity to pick up additional quality equipment for your operation. If you are looking for construction products and equipment, this is the auction. 1000s of Tools, this sale has it. **DON'T GO TO THE BIG STORE, BUY IT HERE!**

EQUIPMENT INSPECTION:

Equipment inspection pre-registration begins Wednesday, Oct. 17, 2012, from 9:00 a.m. to 5:00 p.m. and up to sale day. Equipment may also be inspected sale morning. Equipment will be up and running prior to the sale so come early.

SELLER:

DELTA ELECTRICAL CONTRACTORS OF LANSING, INC. SECURED CREDITOR-DART BANK

**4815 Lansing Road
 Charlotte (Lansing), Michigan 48813**

SITE TELEPHONE:

Contact Auction Personnel:
 517-282-1346/527-648-5108

SALE DATE:

Thursday, Oct. 18, 2012 @ 10:00 a.m. EDT

COORDINATES TO SALE SITE:

GPS: N42.38.250 – W084.42.995

DIRECTIONS TO SALE SITE:

From Lansing: Take I-69 South to Exit 66 (Potterville) then turn right at the light onto Lansing Road. Auction site is approximately two miles north on your left. **WATCH FOR AUCTION SIGNS.**

ABSENTEE BIDS:

Call Linda @ 517-648-5108 for absentee bid forms & terms. Absentee Forms can be e-mailed or faxed to your office. All absentee bids must be received by no later than Oct. 15, 2012.

AIRLINES/AIRPORTS:

Lansing Capitol City Airport (LAN) is served by several Major and Commuter Airline Companies. Private pilots flying in may also use Capitol City Airport (517) 321-6121. Call the airport for further information. Cabs are available from Lansing. Pilots, contact Lansing Flight Service 800-992-7433.

CAR RENTALS:

Avis 800-331-1212
 Budget 800-527-0700
 Hertz 800-654-3131

ACCOMMODATIONS:

The Lansing Area has several nice Hotels and Lodgings within several minutes from the sale site.

HAMPTON INN
 W. Lansing..... 517-627-8381
HOLIDAY INN EXPRESS
 Charlotte 517-541-5000
COMFORT INN
 Charlotte 517-543-7307

MICHIGAN SALES TAX:

6% Michigan sales tax will apply for all equipment sold at this auction. We have tax-exempt forms in the office. Titled equipment will be charged the sales tax at Secretary of State Offices when you register the vehicle.

NO WARRANTIES OR GUARANTEES

All items offered "as is where is". Auctioneers or consignors offer no implied guarantees, warranties expressed or otherwise. **This brochure and the sale catalog are only a guide from sources deemed reliable. Please inspect the equipment thoroughly prior to bidding.**

PAYMENT DETAILS:

All payments must be made by cash, certified check, wire transfer or Visa/Mastercard the day of the auction. Personal or company checks must be accompanied by an irrevocable letter of guarantee from your bank (no exceptions). Sample letter can be obtained at our website, click coming auctions. Auctioneers reserve the right to refuse issuing a bidding card. No equipment removed prior to complete settlement. There is a 10% administrative fee in effect for this auction. All purchasers are required to pay in U.S. Dollars.

NOTICE TO BUYERS:

Titles or Registration Certificates will be mailed to the Purchasers ten (10) banking days after payment has been received.

EQUIPMENT REMOVAL:

ALL EQUIPMENT MUST BE REMOVED FROM THE SALE SITE BY NO LATER THAN: 5:00 P.M. OCT. 22, 2012. ALL ITEMS LEFT AT THE SITE AFTER THIS DATE WILL BE CONSIDERED ABANDONED, SUBJECT TO RESALE BY THE AUCTIONEERS AND CHARGED A STORAGE FEE.

NOTICE TO NON-U.S. BUYERS:

All purchasers without U.S. bank accounts are required to pay in U.S. funds by wire transfer from their bank. Equipment may need to be modified to meet import regulations. Contact your customs broker.

LIVE INTERNET BIDDING:

This auction will feature live online bidding through PROXIBID. All Internet buyers are required to register 48 hours prior to the auction at the Proxibid Website (www.proxibid.com). All live Internet bidders will be charged a 12% buyers fee for this service. Internet bidders will be required to comply with all terms and conditions for this auction as outlined in the listing catalog. Contact Proxibid @ 877-505-7770.

proxibid

**HEAVY EQUIPMENT
 AUCTIONNERS/
 INVESTMENT RECOVERY**